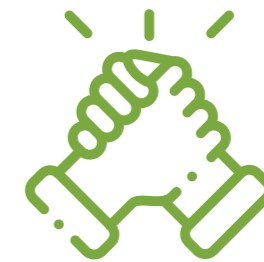




## COMPANY PROFILE





---

We would like to  
Help, Inspire  
& Guide you



---

# Welcome to Our Company Profile

Great company experience  
since early 2015



## Table of Contents

|                         |    |
|-------------------------|----|
| Table of Contents ..... | 6  |
| About Us .....          | 7  |
| Our Services .....      | 8  |
| Project Locations.....  | 10 |
| Clients.....            | 12 |
| Portfolio.....          | 14 |
| Contact Us.....         | 38 |

## About Us

We will bring you ideas to life!



MAAP Consultancy Group is one of the highly professional engineering firms, that delivering full range of engineering services, known for our greatly performance.

MAAP was established in 2015 by **Engineer Ahmed Farouk** and partners that carries with them a very long experience in engineering services and construction.

This extension experience and knowledge of client's needs and requirements was the key to deliver the most successful engineering services that exceeding client's expectations.
















We would like to help, inspire and guide you.

# Our Services

We will give you the best services



OUR EXPERTISE EXTENDS TO ALL MEP SYSTEM, NAMINGLY:  
(ELECTRICAL, LIGHT CURRENT, HVAC, FIRE FIGHTING, PLUMBING, BUILDING MANAGEMENT SYSTEM)

|   |  |   |
|---|--|---|
| <br>Electrical Design          | <br>Mechanical Design                   | <br>ICT Design               |
| <br>CFD Analysis               | <br>"BIM" Building Information Modeling | <br>Shop Drawings Production |
| <br>Value Engineering Studies | <br>Site Supervision                   | <br>Solid Waste Management  |
| <br>Budgeting & Cost Control | <br>Tendering Assessment              | <br>Owner Representation   |
| <br>Facade Lightning Design  | <br>Infrastructure Networks Design    | <br>Stress Analysis        |

# Projects Locations

Our Projects all around the world



## AFRICA

Egypt  
Zambia  
Uganda  
Chad



## ASIA

Saudi Arabia  
UAE  
Qatar  
Oman

# Our Clients

Meet our happy clients



# Our Portfolio

Work that has been done

## ALAMAIN TOWERS

The grand towers consist of 42 floors with a range of studios and four-bedroom apartments. A 4-floor podium filled with amenities & services for the homeowners of the tower, with total BUA 135,850 sqm.

MAAP acts as a sub-consultant for EMCOTech.

MAAP's Scope includes all MEP shop drawing documents through 3D Revit (LOD 400).

Client: EMCOTech



## ZED TOWERS

The project is a 10-storey premium residential complex with total BUA 55,000 sqm.

MAAP's scope includes site supervision & all MEP shop drawing through 3D Revit (LOD 400).

Client: EMCOTech

## AL-ASMAKH TOWER QATAR

The project is a mixed-use building of 32-storey with total BUA 35,310sqm.

MAAP's Scope includes the redesign of Plumbing, Fire Protection & HVAC systems including value engineering study.

Client: EMCOTech





## GOLDEN GATE

The Project consists of 10 Administrative / Mixed use buildings each is 3 storey & 2- Combined Basement floors located in Fifth settlement with a total BUA 187,500 sqm. BUA 187,500 sqm.

MAAP's Scope includes all MEP shop drawing & calculations documents through 3D Revit (LOD 400) and asbuilt drawings (LOD 500).

Client: EMCOTech



## AL KHOBAR RESIDENTIAL TOWER

The Project is a Residential tower building located in Al-Khobar, Saudi Arabia, the project consists of 39 story building in addition to 5 podiums with a total BUA of 53,000 sqm.

MAAP's scope includes the design of Electrical, Light current, Plumbing, Fire Protection and HVAC Systems.

Client: Confidential

## SUMO

Sumou building is a Residential tower located in Jeddah, Saudi Arabia, the project consists of two towers 70 floor BUA of 415,000 sqm.

MAAP's scope includes the Design Review & Value Engineering of Electrical, Light current, Plumbing, Fire Protection, HVAC and Waste Management Systems.

Client: TRIPLE A





## SECTOR

The Project consists of two Administrative buildings 25A&25B each is 8-storey & 3- Basement floors located in New Administrative Capital with a total BUA 67,848 sqm.

MAAP's scope includes the design of Electrical, Light current, Plumbing, Fire Protection and HVAC Systems.

**Client:** MODAD Properties  
**Architect:** Raef Fahmi Architects

## EG-BANK

EG-Bank is an administrative building located in Fifth settlement with a total BUA 8840 sqm.

MAAP's Scope includes all MEP shop drawing through 3D Revit (LOD 400)).

**Client:** EMCOTech

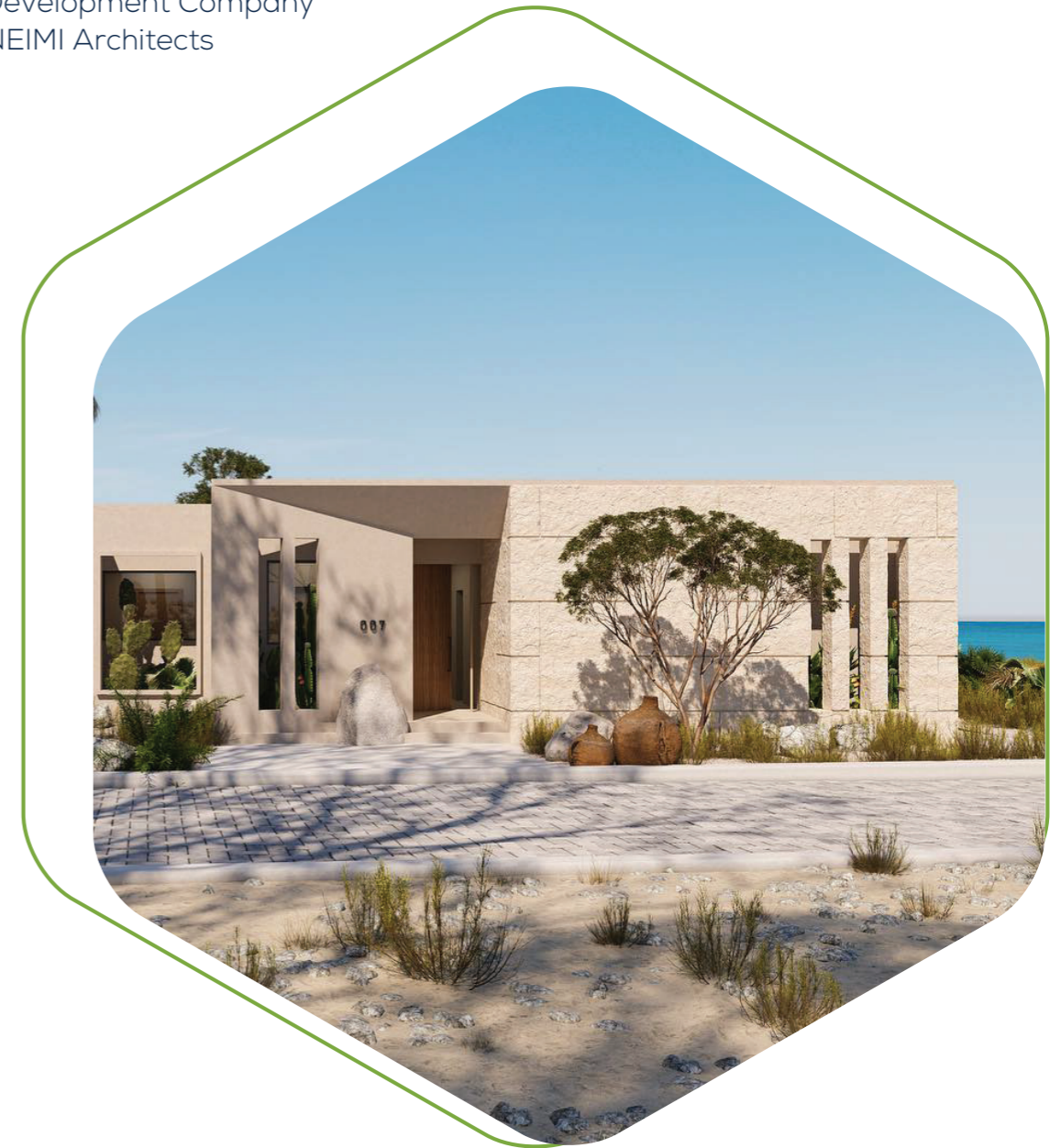


## MAZEEJ HOTEL

The project is a hotel located in soma bay comprises the main building, 61 guest rooms, a spa, two swimming pools and shops with a total BUA 6,027 sqm.

MAAP's scope includes the design of Electrical, Light current, Plumbing, Fire Protection and HVAC Systems.

**Client:** Soma bay Development Company  
**Architect:** EL GHONEIMI Architects





## SIX SENSES RESORT

The project is a resort in Saudi Arabia's Amaala will offer 64 rooms, six suites, 30 villas and 25 branded residences.

MAAP's scope Under Ground Shop drawings & MEP Builders work through 3D Revit (LOD 400).

Client: Hassan Allam Construction

## QIDDAYA WATER THEME PARK

The project is a water park located at the heart of Qiddiya in the kingdom of Saudi Arabia with Total Area 409,545 sqm.

MAAP's scope includes infrastructure shop drawing through BIM (Civil 3D/ Revit & Sewer GEMS).

Client: Sawaed Eltasheed



## NEW GIZA – MEDITOWN

The project is a health care destination located at New Giza on 120,000 sqm.

MAAP's scope includes MEP Shop drawing through 3D Revit. ( LOD 400 ).

Client: EMCOTech



## I-BUSINESS PARK

The project is 3 towers connected each of 20-storey and 4 basements with total BUA 83,216 sqm. The project's function is mixed use between commercial, administrative, and medical.

MAAP's Scope includes the design of electrical, Light current, Plumbing, Fire Protection & HVAC systems through 3D revit (LOD 300).

**Client:** Arqa Developments  
**Architect:** ArtLine Group



## CITADEL COMPLEX

The project is a 7-storey mixed use building with total BUA 28,000 sqm.

MAAP's Scope includes all MEP design review & the redesign of electrical, Light current, Plumbing, Fire Protection & HVAC systems.

**Client:** Sorouh Developments  
**Architect:** Mimar Architect

## JAYA BUSINESS COMPLEX

The project is a tower of 10-storey and 2 basements with total BUA 19,183 sqm. The function is mixed use between commercial and administrative.

MAAP's Scope includes the design of electrical, Light current, Plumbing, Fire Protection & HVAC systems through 3D revit (LOD 300).

**Client:** Egyptian Developers  
**Architect:** Archrete Design Studio



## BEACH TOWN CENTER

Beach Town is a commercial and service center for Ramla Resort on Ras El Hekma. It consists of 36 buildings with a total BUA 7,282 sqm.

MAAP's scope includes the design of Electrical, Light current, Plumbing, Fire Protection and HVAC Systems.

Client: Marakez

Architect: TGH Architects



## IC RESIDENTIAL APARTMENTS

The Project is a Residential tower building located in Al-Khobar, Saudi Arabia, the project consists of 4 story building with a total BUA of 14,000 sqm.

MAAP's scope includes the design of Electrical, Light current, Plumbing, Fire Protection and HVAC Systems.

Client: Confidential

## EL-BATHAA NEIGHBORHOOD

Infrastructure project located in Riyadh, Saudi Arabia, with a total area of 115,000 sqm.

MAAP's scope includes infrastructure shop drawing through BIM (Civil 3D/ Revizto & Sewer GEMS).

Client: Confidential





## RAMLA RAS ELHEKMA

The project is a Resort Located at Ras El Hekma Bay / North Coast.

MAAP's scope includes the design of Electrical, Light current, Plumbing, and HVAC Systems for the residential villas R1 & R3.

**Client:** Marakez for Real Estate  
**Architect:** Rawasem Architecture Workshop

## MISTA RESTAURANTS

The project is a restaurant with many branches located at Mall of Arabia, District 5 Mall & Arkan plaza.

MAAP's scope includes the design of Electrical, Light current, Plumbing, Fire Protection and HVAC Systems.

**Client:** Mista



## JAYA EAST EL SHOROUK CITY

The project is a 4-storey mixed use building located at El Shorouk city with Total BUA 6,000 sqm.

MAAP's scope includes Design, Shop drawing & Site Supervision of Electrical, Light current, Plumbing, Fire Protection and HVAC Systems.

**Client:** Egyptian Developers  
**Architect:** Smarch Architecture



## THE ROOK MALL

The project is a mixed-use building of 12-storey and 3 basements with total BUA 10,266 sqm.

MAAP's Scope includes the design of electrical, Light current, Plumbing, Fire Protection & HVAC systems.

Client: Mazaya Developments

Architect: Archrete Design Studio



## CFC OFFICES & SALES CENTER

The project is an administration building of 4-storey with total BUA 5,800 sqm.

MAAP's scope includes the fit out design of electrical, light current, plumbing, fire protection and HVAC systems.

Client: AFGRE, Alfuttaim

Architect: TDF

## ZARA EXPANSION CFC RETAILS MODIFICATION

The project is expansion in Zara store, CFC branch from BUA 1,300 sqm to 3,750 sqm. Redesigning in CFC designs to suit the new expansion in Zara.

MAAP's Scope includes the design of electrical, Light current, Plumbing, Fire Protection & HVAC systems.

Client: AFGRE (Al Futtaim Group)

Architect: Scope Architect





## VERITY BUSINESS COMPLEX

The project is a 12-storey mixed use building located at New Capital with Total BUA 11,700 sqm.

MAAP's scope includes the design of Electrical, Light current, Plumbing, Fire Protection and HVAC Systems.

**Client:** NCB Developments  
**Architect:** Archrete Design Studio

## SOLDIERE MALL

The project is a 9-storey mixed use building located at New Capital with Total BUA 12,085 sqm.

MAAP's scope includes Design, Shop drawing & Site Supervision of Electrical, Light current, Plumbing, Fire Protection and HVAC Systems through 3D Revit. (LOD 300 / 400).

**Client:** Waren Developments  
**Architect:** Rawasem Architecture Workshop



## GOLDEN TOWER 2

The project is a 10-storey mixed use building located at New Capital with Total BUA 18,110 sqm.

MAAP's scope includes the design of Electrical, Light current, Plumbing, Fire Protection and HVAC Systems.

**Client:** AL-Naser Developments  
**Architect:** Archrete Design Studio





## SWAN LAKE WEST

The project is feature Eighteen (18) uniquely designed G+2 buildings located at the heart of 6th of October City with Total BUA 63,975 sqm.

MAAP's scope includes the Design Review & Value Engineering of Electrical, Light current, Plumbing, Fire Protection, HVAC and Waste Management Systems

**Client:** Hassan Allam Properties

**Architect:** Raef Fahmy Architects



## THE NILE ESTATE MANYAL VILLA

The project is a luxurious residential palace consists of 5 buildings with total BUA 5,285 sqm.

MAAP's scope includes the Infrastructure & buildings design of Electrical, Light current, Plumbing, Fire Protection and HVAC Systems.

**Client:** The Nile Estate Development

**Architect:** Alchemy Design Studio



## EIGHTEEN - PAVILIONS RESIDENTIAL APARTMENTS

The project is residential project consists of 4 residential buildings with 2 shared basements with total BUA 47,000 sqm located in Pakistan Islamabad.

MAAP's scope includes the Design Review & Value Engineering of Electrical, Light current, Plumbing, Fire Protection & HVAC Systems.

**Client:** Eighteen by ORA

**Architecture :** RED Architects





## STELLAR BUSINESS COMPLEX – NEW CAIRO

The project is a (7-storey) mixed use “Administrative - commercial -medical” building located at New Cairo with Total BUA 6,000 sqm.

MAAP’s scope includes Design of Electrical, Light current, Plumbing, Fire Protection and HVAC Systems.

Client: JD Holding  
Architect: Art Line Group

## GLISTER BUSINESS COMPLEX - NEW CAIRO

The project is a (6-storey) mixed use “Administrative - commercial -medical” building located at New Cairo with Total BUA 5,000 sqm.

MAAP’s scope includes Design of Electrical, Light current, Plumbing, Fire Protection and HVAC Systems.

Client: JD Holding  
Architect: Art Line Group



## THE WALK MALL – NEW CAPITAL CITY

The project is a (8-storey) mixed use building “Administrative - commercial -medical” located at New Capital with Total BUA 21,000 sqm.

MAAP’s scope includes Design CAD 2D, Shop drawing Revit 3D LOD 350 & Site Supervision of Electrical, Light current, Plumbing, Fire Protection and HVAC Systems.

Client: Constructa  
Architect: Eng. Bahgat Sabry



## THE CLINICS

The project is a 3-storey and 2 basements with total BUA 2,000 sqm.

MAAP's scope includes site supervision and the design of electrical, light current, plumbing, fire protection and HVAC systems through 2D AutoCAD.

**Client:** Avenues Real Estate

**Architect:** Hany Saad Innovations



## GEMINI

The project is a mixed use mall located at New Capital with total BUA 10,675 sqm.

MAAP's scope includes the design of electrical, light current, plumbing, fire protection and HVAC systems through 2D AutoCAD.

**Client:** Mazaya Development

**Architect:** Archrete Design Studio

## M BUSINESS TOWER

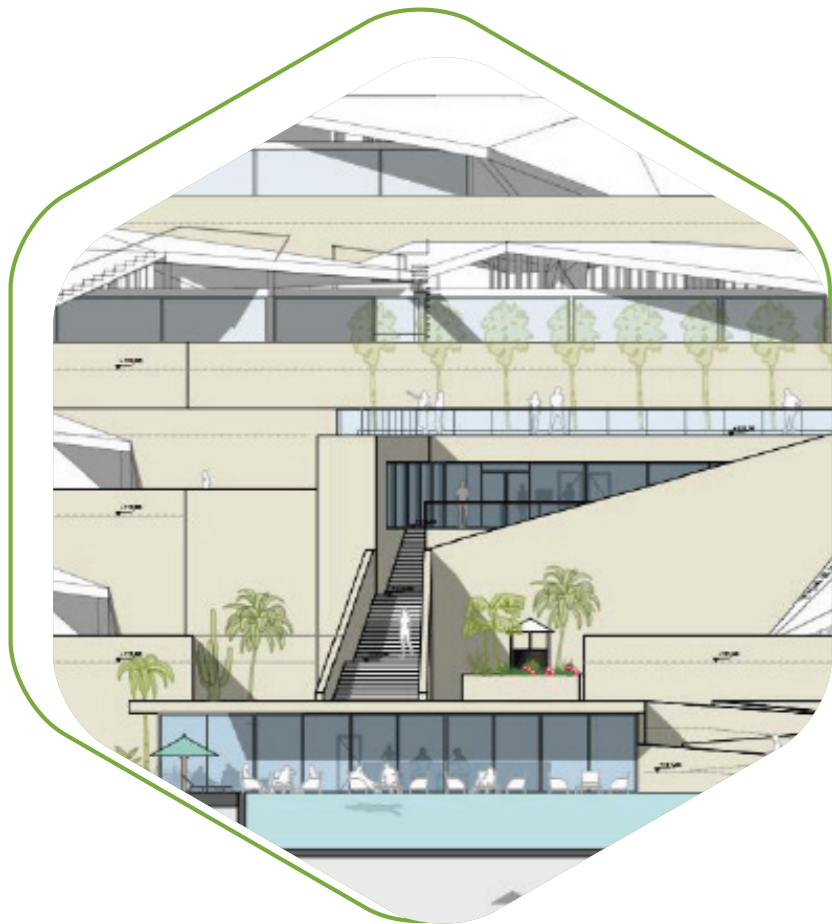
The project is a 12-storey mixed use building between commercial and administrative located at New Capital with total BUA 11,250 sqm.

MAAP's scope includes the design of electrical, light current, plumbing, fire protection and HVAC systems through 2D AutoCAD.

**Client:** Modon Developments

**Architecture :** Archrete Design Studio





## ILMONT GALALA CLUB HOUSE

The project is 3 stepping at different levels with total BUA 2,000 sqm

MAAP's scope includes design of electrical, light current, plumbing, fire protection and HVAC systems through 3D Revit.

**Client:** Tatweer Misr  
**Architect:** Rawasem Architect

## MOUNTAIN VIEW CLUB HOUSE

The project is a club house located in the heart of the New Cairo with total BUA 2,000 sqm.

MAAP's scope includes design of electrical, light current, plumbing, fire protection, and HVAC systems.

**Client:** Mountain View



## THE ADDRESS EAST

The project is a mixed use between office buildings, club house, kinder garden and mosque with total BUA 30,000 sqm.

MAAP's scope includes the design of electrical, light current, plumbing, fire protection & HVAC systems.

**Client:** Dorra Developments



## CAIRO AMERICAN COLLEGE

The project is a school located in Maadi with BUA 6,350 sqm. Controlling projects' budget without affecting the quality and performance is a challenging role in a very money oriented era. Controlling the budget through providing cost estimate studies through each design stage helps the Clients and Project Manager to monitor the overall project budgets alongside with clients' needs.

MAAP's Scope includes site supervision & the design review of electrical, light current, Plumbing, Fire Protection & HVAC systems.

**Client:** Cairo American College  
**Architect:** Nature Architect



## ALEX UNIVERSITY, CHAD BRANCH

The project is university located in Chad with total BUA 9,700 sqm.

MAAP's scope includes all MEP shop drawing documents.

**Client:** Arab Contractors

## CAPITAL INTERNATIONAL- AL UNIVERSITY (CIU)

The project is the new international university in the new administrative capital with total BUA of 26,400 sqm

MAAP's Scope includes the design of electrical, & Light current.

**Client:** International Capital Company for Education





## EL NADA HOSPITAL

The project is a hospital located in Sheikh Zayed city of total BUA 8,800 sqm.

MAAP's Scope includes Site supervision & the design of electrical, Light current, Plumbing, Fire Protection, HVAC systems.

**Client:** EL Nada Hospital  
**Architect:** Shaltot Architect

## MILLENNIUM HOSPITAL

The project is a Hospital located in Doqqi, One of Millennium company's projects for medical services' projects with total BUA 3,000 sqm. Our scope in this project started from the initial MEP design, providing shop drawings to contractors and most importantly site supervision and presence in every stage of persecution.

MAAP's Scope includes Site supervision & the design of electrical, HVAC, Plumbing, Fire Protection & medical gases systems.

**Client:** Millennium Hospital  
**Architect:** Shaltot Architect



## HYATT HOUSE HOTEL

The project is hotel located in 6th of October city with BUA 7,250 sqm. The well-known hotel franchise "Hayat House" is launching a new branch The building is an existing one located in 6th of October city.

MAAP's Scope includes the design of electrical, Light current, Plumbing, Fire Protection & HVAC systems.

**Client:** EL Dau Developments



## CRESTA BELLA HILLS

The project is a compound located in New Cairo, the project's function is mixed use between residential and commercial with total BUA 15,000 sqm.

MAAP's scope includes the design of infrastructure mechanical and electrical networks, including water supply, drainage, irrigation, low voltage, medium voltage and telecommunications.

**Client:** Saudi American Group Development



## WEST MARK JEDAR

The project is a mixed use between commercial and administrative located in 6th of October city with total BUA 8,500 sqm.

MAAP's scope includes HVAC site supervision, all MEP shop drawing, design of HVAC system, design review of electrical system.

**Client:** Real Mark Developments  
**Architect:** Studio Plus Architect

## THE ESTATES RESIDENCE New Zayed

The project is residential apartments located at New Zayed City.

MAAP's scope includes the design of electrical, light current, plumbing, fire protection and HVAC systems through 3D Revit (LOD 300).

**Client:** Sodic





## TRIUMPH INTERNATIONAL SCHOOL

The project is an international school at New Administrative Capital with total BUA 20,800 sqm.

MAAP's scope includes the design & shop drawing of Electrical, Light current, Plumbing, Fire Protection and HVAC Systems.

**Client:** Quality Education  
**Architect:** Dr. Omran Design Studio

## EVORA MALL

The project is a mixed use building of 12-storey with total BUA 10,227 sqm.

MAAP's Scope includes the design of electrical, Light current, Plumbing, Fire Protection & HVAC systems.

**Client:** RUD Developments  
**Architect:** Archrete Design Studio



## FIN SQUARE MALL

The project is a mixed use building of 7-storey with total BUA 9,970 sqm.

MAAP's Scope includes the design of electrical, Light current, Plumbing, Fire Protection & HVAC systems.

**Client:** Mazaya Developments  
**Architect:** Archrete Design Studio







## CITY CLUB MALL

The project is a 2-storey exceptionally well positioned mall located in Shrouq City with total BUA 4,800 sqm.

MAAP's scope includes site supervision, shop drawing and design of electrical, Light current, Plumbing, Fir Protection & HVAC systems.

Client: Aswaq Developments

## ARENA MALL

The project is a 3-storey mall with total BUA 6,000 sqm. The project's function is mixed use between medical, commercial and administration.

MAAP's scope includes site supervision, shop drawing and design of electrical, Light current, Plumbing, Fir Protection & HVAC systems.

Client: Aswaq Developments



## MERCADO MALL

The project is a 2-storey well positioned mall with total BUA 7,000 sqm. The project's function is mixed use between commercial, service and recreational activities.

MAAP's scope includes site supervision, shop drawing and design of electrical, Light current, Plumbing, Fir Protection & HVAC systems.

Client: Aswaq Developments



## VENECIA FACTORY

The project is the new headquarters, factory and storage warehouse for Venecia company with total BUA of 19,200 sqm.

MAAP's scope includes the design of electrical, light current, plumbing, fire protection and HVAC systems.

**Client:** Venecia Company

**Architect:** Centroid Architects & Planners



## SERIOPLAST FACTORY

The project is one of Serioplast's factories in Egypt with total BUA of 20,000 sqm.

MAAP's Scope includes the design of electrical, Light current, Plumbing, Fire Protection & HVAC systems.

**Client:** Modern Engineering Group

**Architect:** MEG



## SMART PACK FACTORY

The project is one of Smart Pack's factories in Egypt with total BUA of 16,400 sqm

MAAP's Scope includes the design of electrical, Light current, Plumbing, Fire Protection & HVAC systems.

**Client:** Modern Engineering Group

**Architect:** MEG





## SEEG-EGYPT-TABLET FACTORY

The project is a factory which is part of the famous great industrial zone of Samsung Electronics in Kom Abo Rady, Beni Suef. The building is to contain the production line of the tablets with total BUA 3,800 sqm.

MAAP's Scope includes the design of the life safety related MEP systems, fire alarm, fire protection & smoke management systems.

**Client:** Samsung Electronics  
**Architect:** MEG & Tecton

## SMART PACK HANGER

The project is warehouse to serve for the smart pack's factories logistics. The warehouse is located in the industrial zone of 10th of Ramadan city with total BUA 11,000 sqm.

MAAP's Scope includes the design of electrical, Light current, Plumbing, Fire Protection & HVAC systems.

**Client:** The Arabian Company for Sweeteners

**Architect:** MEG



## DAMCO (MAERSK) WAREHOUSE

The project is warehouse designed and executed to match the international standards and owned by the famous logistics services company Maersk. The warehouse is located in the free zone of Al Ismailia governorate with total BUA 4,500 sqm.

MAAP's Scope includes site supervision & design of electrical, Light current, Plumbing, Fire Protection & HVAC systems.

**Client:** DAMCO, Latterly Maersk

**Architect:** Massar





[www.maapeg.com](http://www.maapeg.com)





#### **Address**

Head Office  
New Cairo, Cairo, Egypt

#### **Contact**

Phone: +2 02 261 988 78  
Email: [info@maapeg.com](mailto:info@maapeg.com)  
Web: [www.maapeg.com](http://www.maapeg.com)

